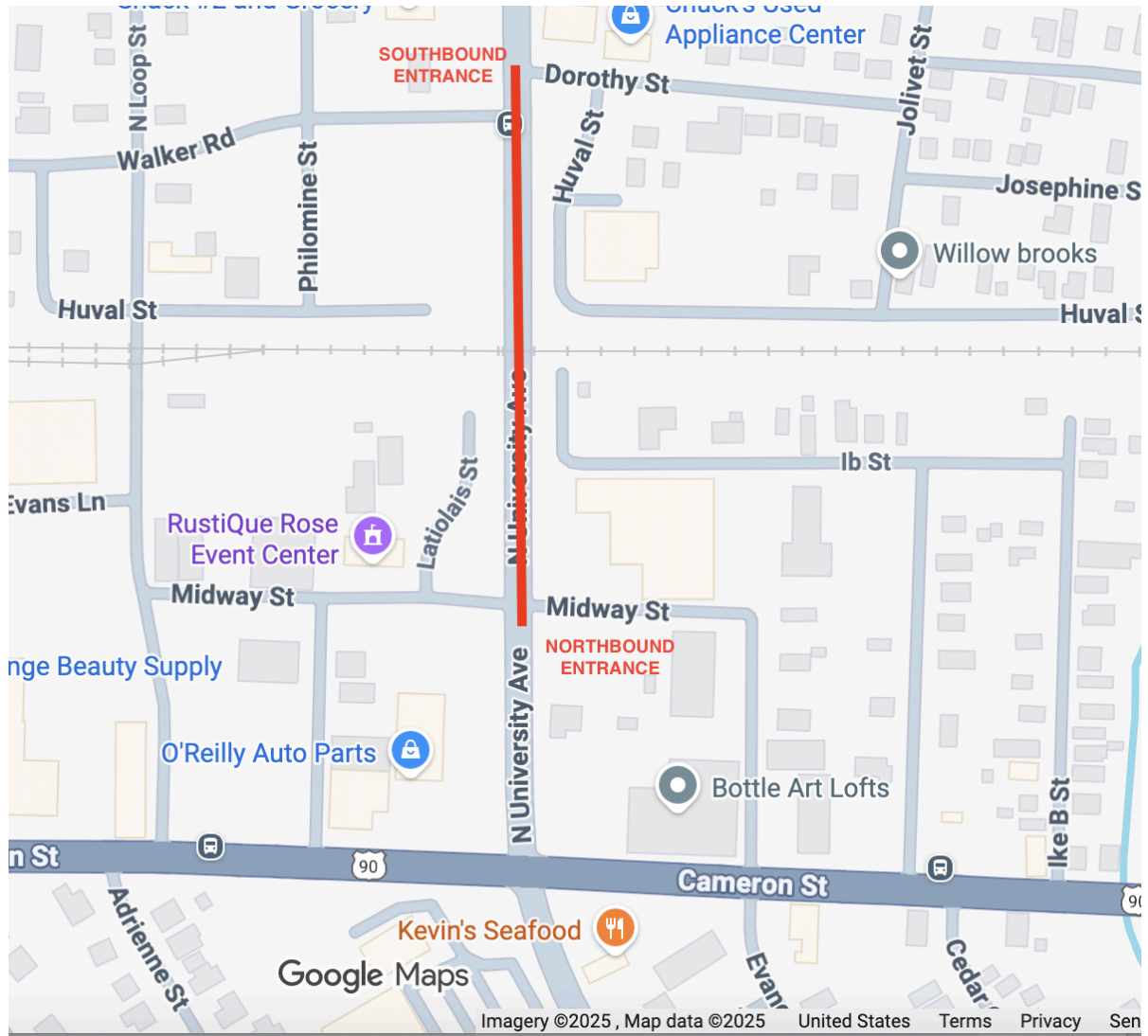




RFQ Addendum: University Avenue Underpass Mural

Site Address: 339 N. University Avenue, Lafayette, La 70506

OVERHEAD SITE MAP: Underpass in RED



SITE PHOTOS:

University Ave Underpass entrance traveling from North to South (horizontal)



University Ave Underpass entrance traveling from North to South (vertical)



University Ave Underpass entrance traveling from South to North (horizontal)



University Ave Underpass entrance traveling from South to North (vertical)



PUBLIC ART COMMUNITY FEEDBACK

During Summer 2025, Basin Arts and LCG hosted a series of Public Art Office Hours at surrounding businesses along University Ave. These gatherings were relaxed, drop-in style events where community members could directly connect public art project facilitators and share feedback about ideas for public art sites and concepts.

<https://www.katc.com/lafayette-parish/residents-encouraged-to-share-input-on-public-art-for-university-avenue-corridor-plan>

Included below are a selection of thoughts contributed by local community members related to the University Ave. Underpass Mural:

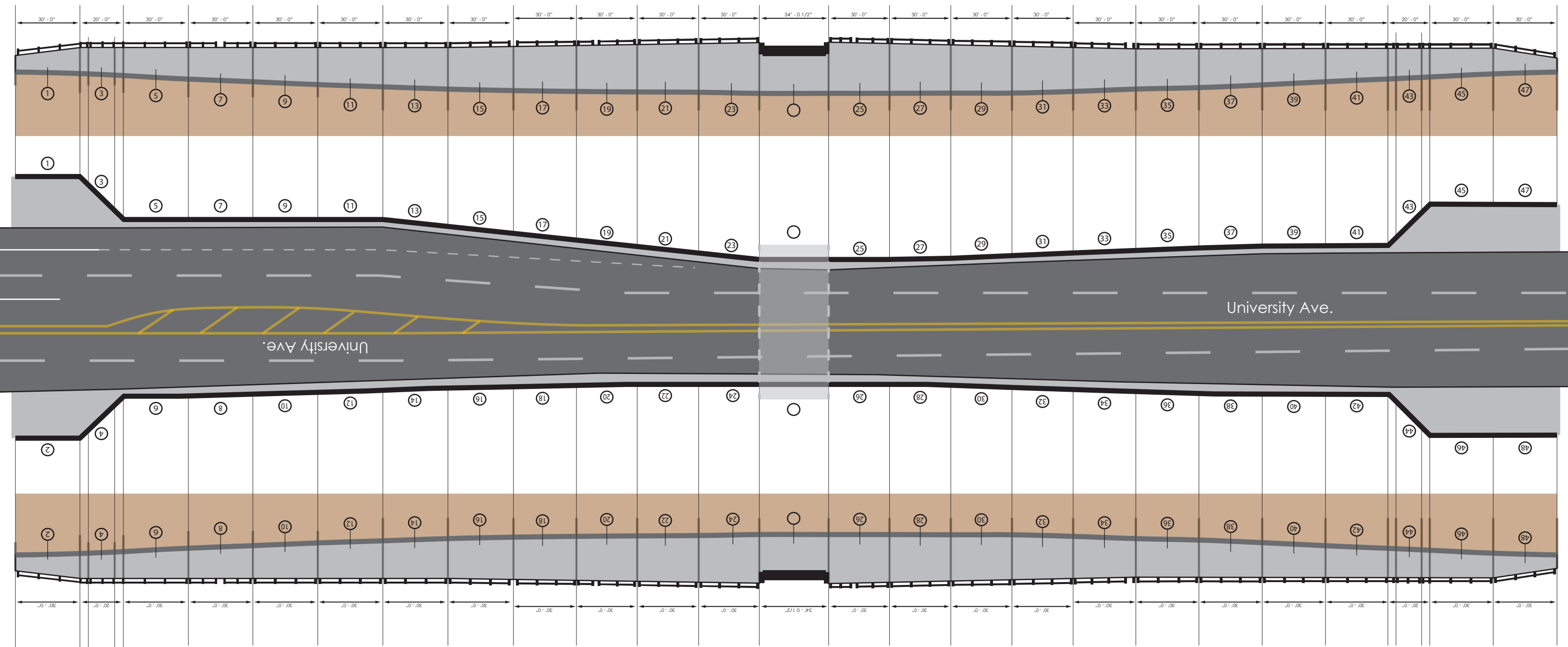
- The site is a portal from past to present which encompasses important stories and history of Lafayette from the Northside to the University of Louisiana-Lafayette and beyond.
- Artists should take time to research the history and stories of important changemakers of this intersection
- An “all roads lead to here” philosophy that includes the community at large, to quote Judge Jules Edwards “together we can do better”
- Careful to not be too distracting to drivers at underpass
- History, research, and storytelling about important community figures should be a part of the design process
- The mural could include icons or images/symbols to represent local business owners, teachers, neighbors, places, spaces of history on the underpass.
- The mural could provide a future opportunity for an auditory listening guide telling the story of these people and places in Lafayette’s history.
- Wilfred Pierre recognition, Judge Jules Edwards, Sid Williams (El Sidos), Janel Chargois, Laura’s restaurant, 4 students who integrated to UL recognition are some notable figures to research
- Concepts should represent important contributions to education and public service in Lafayette.

SITE MAP RENDERING WITH ELEVATIONS WITHIN THIS PDF:

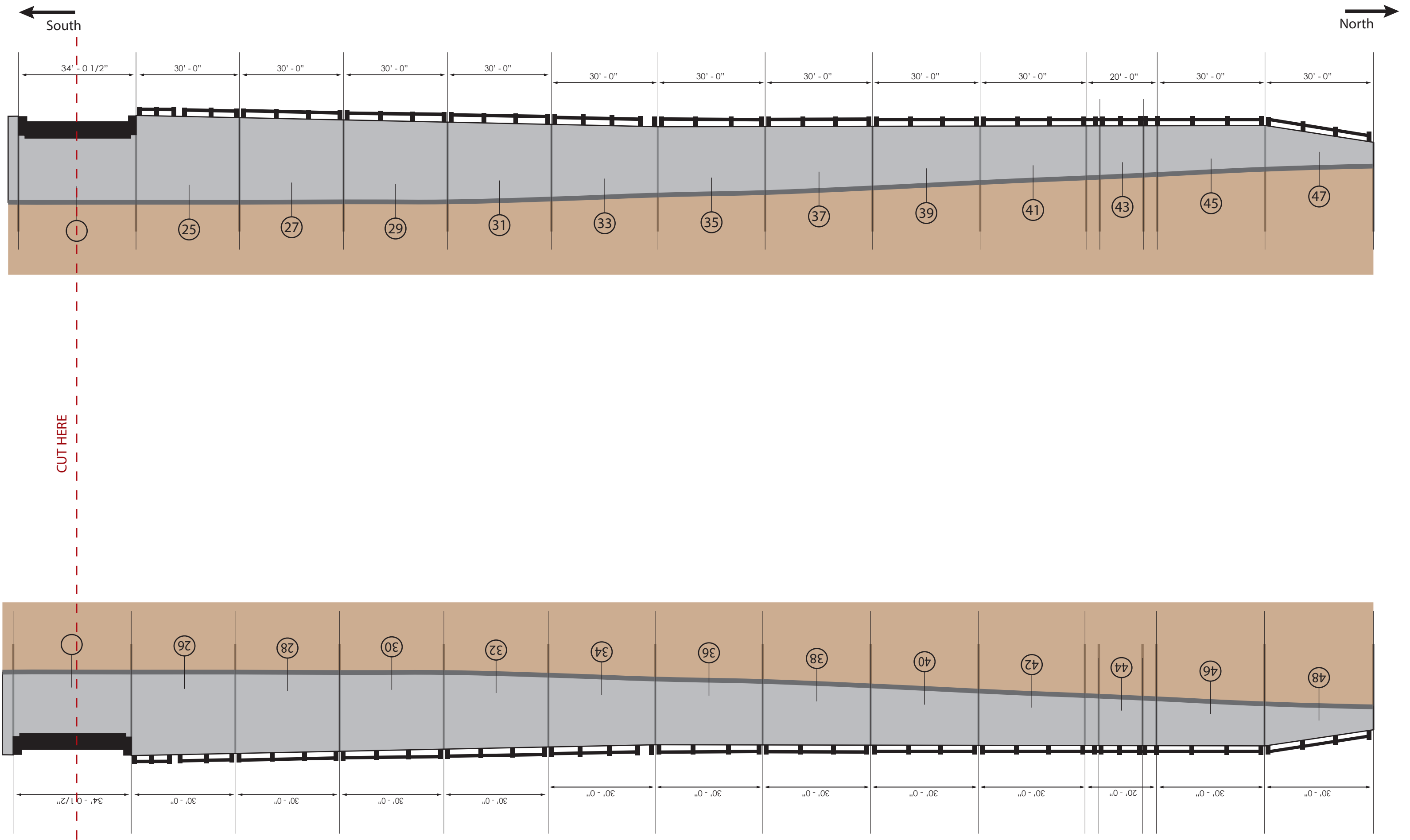
1. Set One is to scale and intended to be printed on 11x17 paper
2. Set Two includes simple landscaping renderings at the North and South entrances and is not to scale. Set Two can be printed on 8.5 x 11 paper

South

North



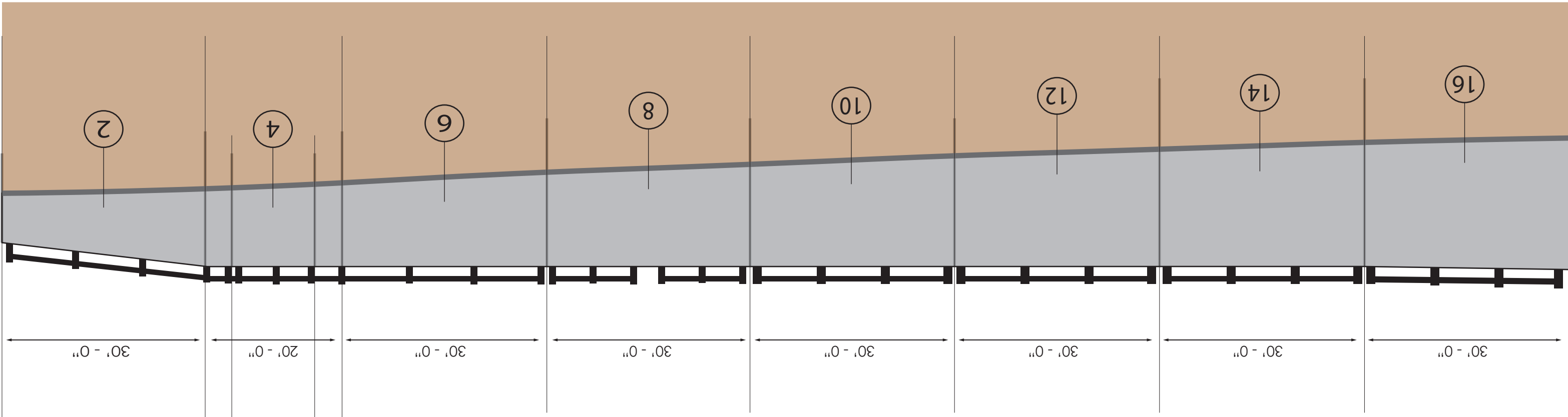
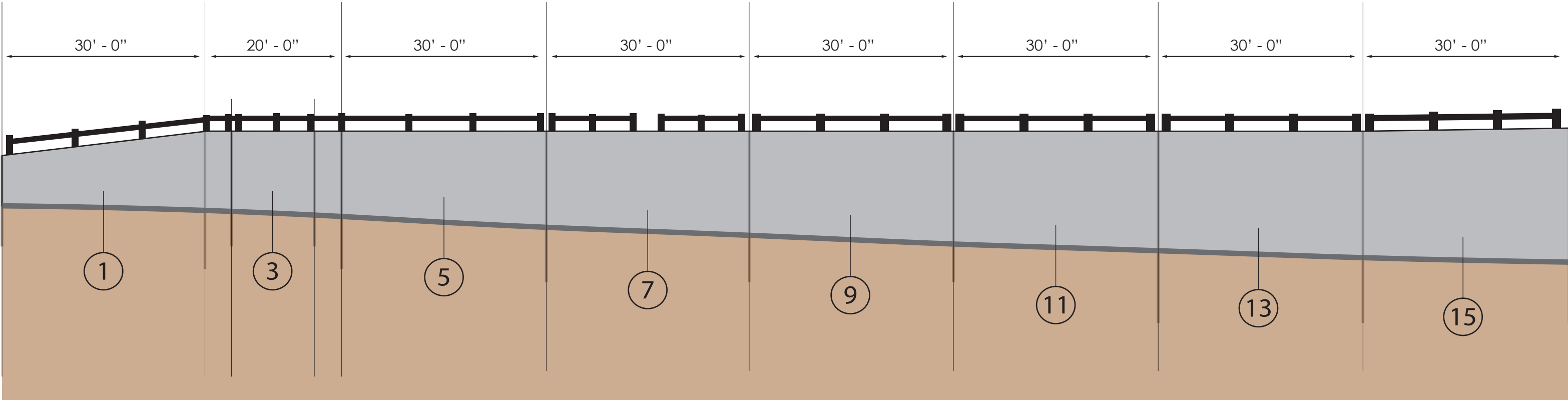
WALL ELEVATIONS AND PLAN (SMALL)



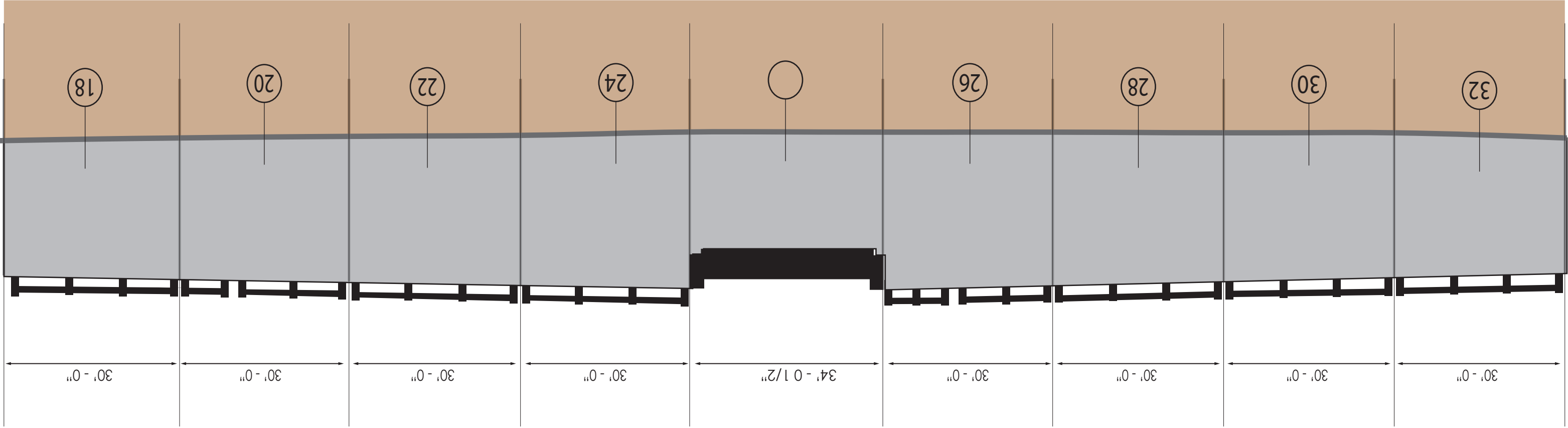
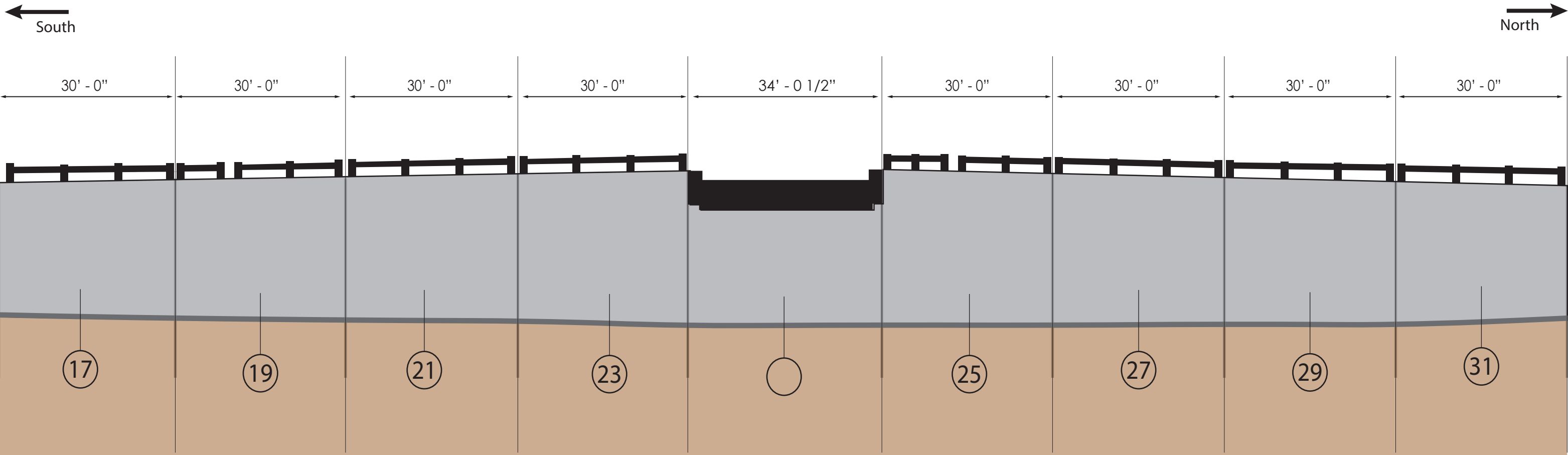
WALL ELEVATION (MEDIUM NORTH)

← South

North →



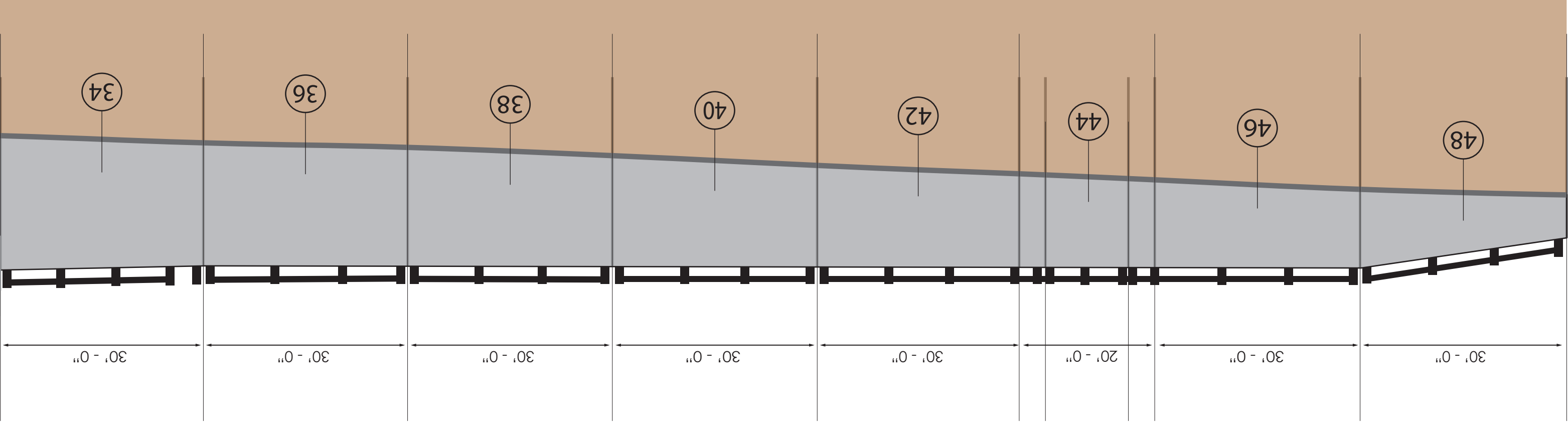
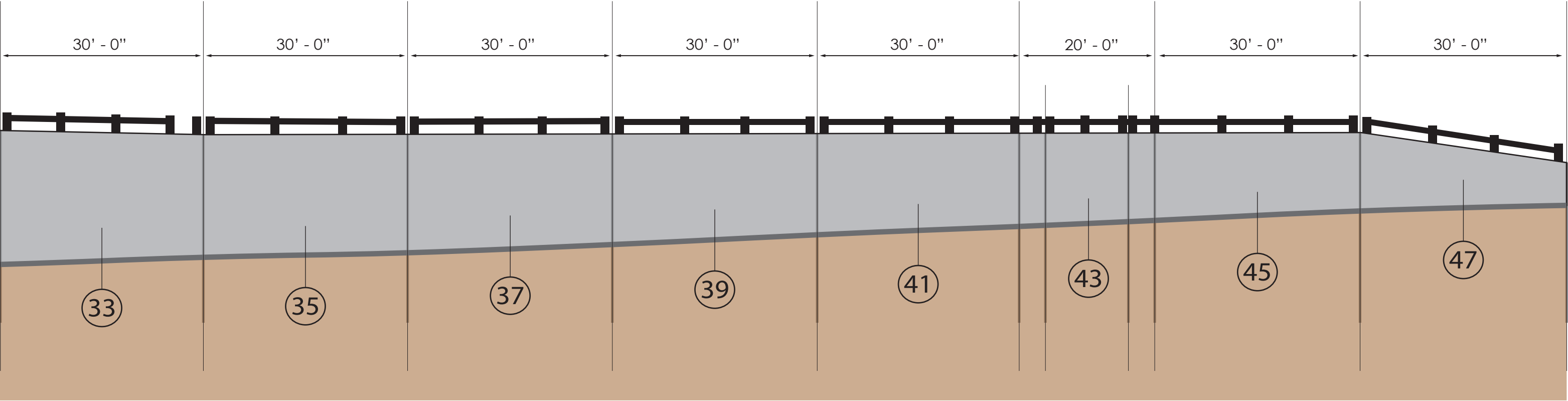
WALL ELEVATION (LARGE SOUTH)



WALL ELEVATION (LARGE MIDDLE)

← South

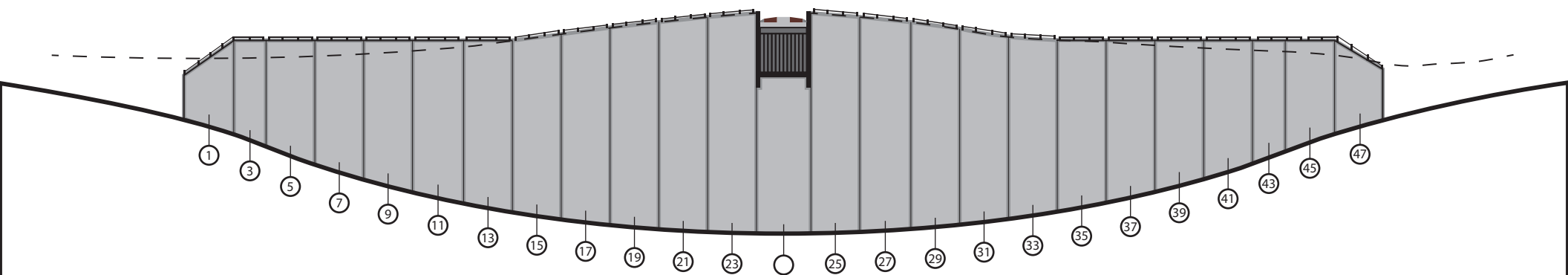
North →



WALL ELEVATION (LARGE NORTH)

← South

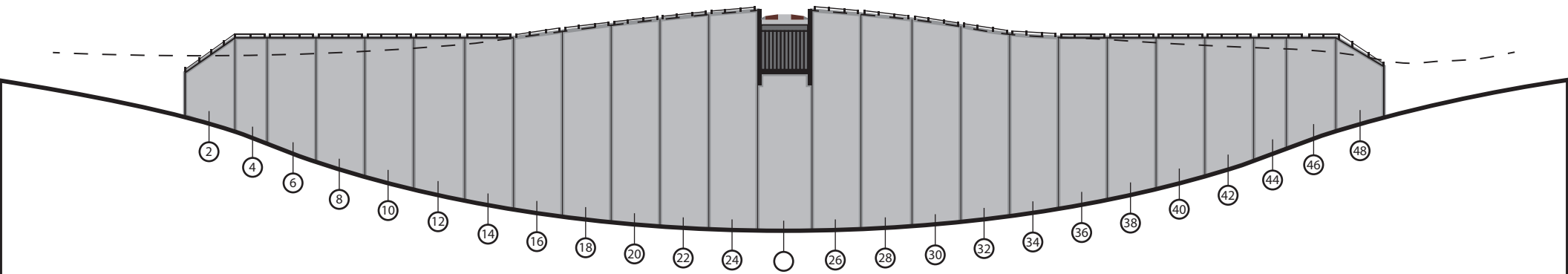
→ North



WEST WALL SHOWN (not to scale)

← South

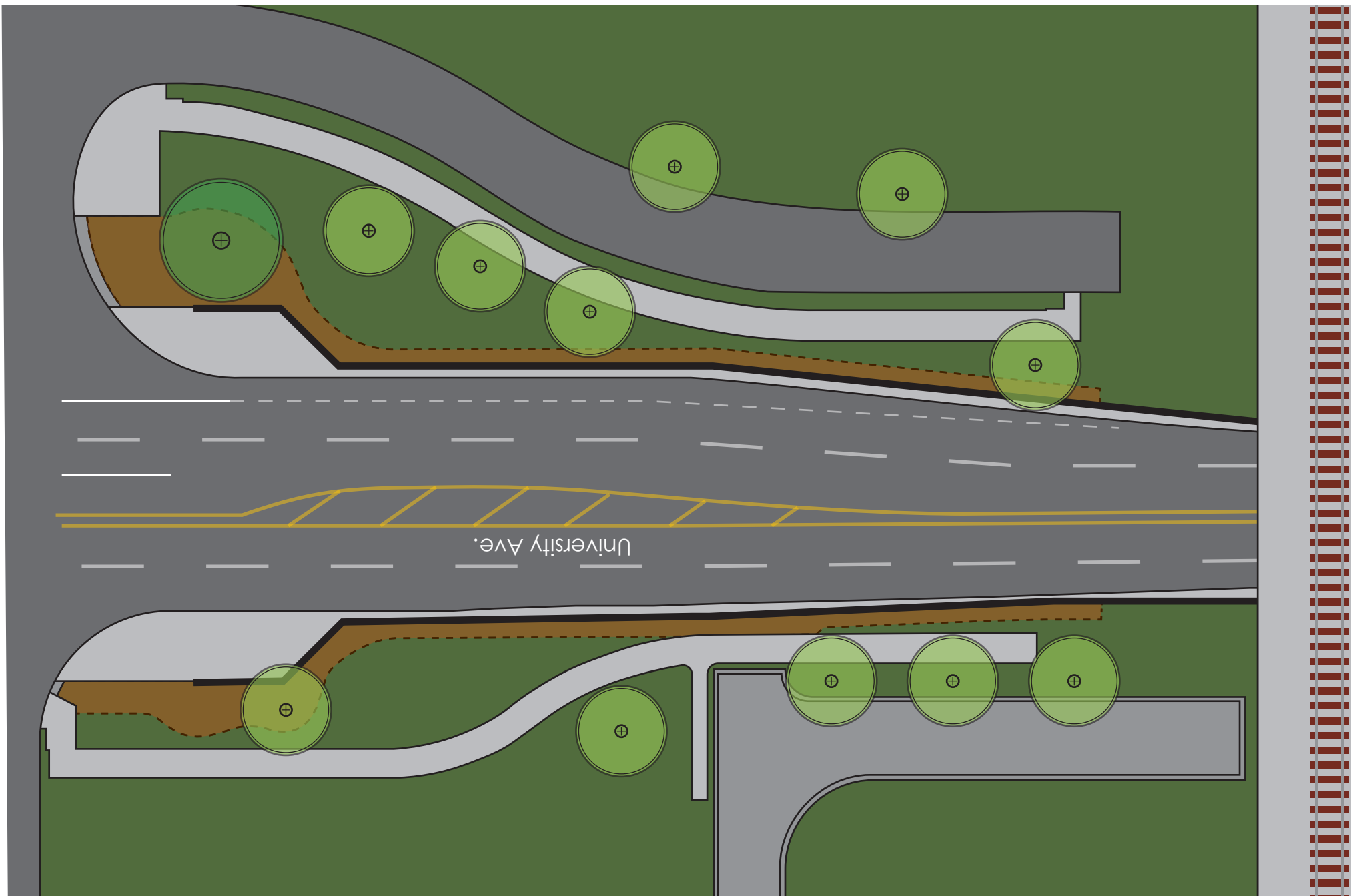
→ North



EAST WALL SHOWN (not to scale)

← South

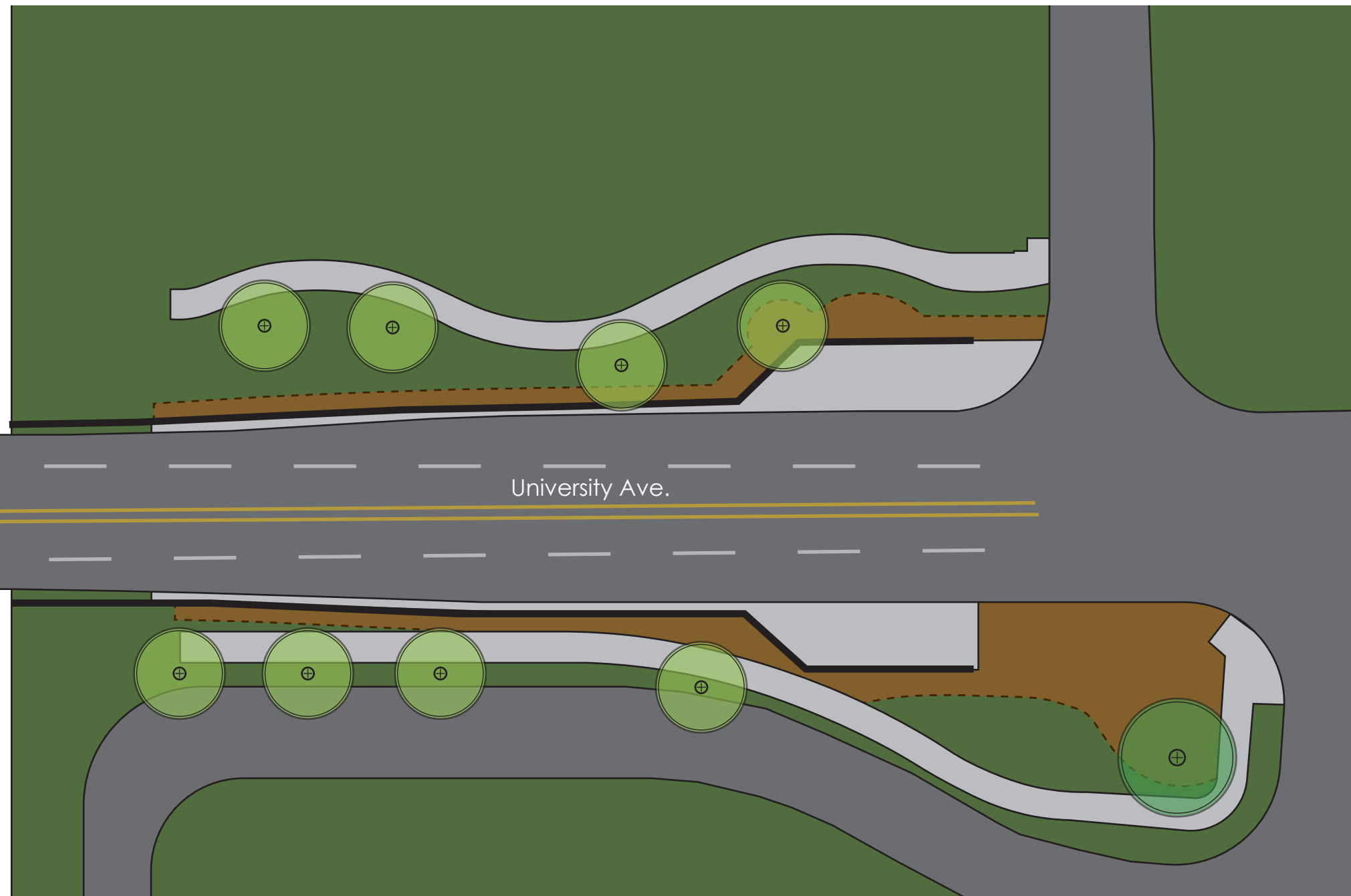
→ North



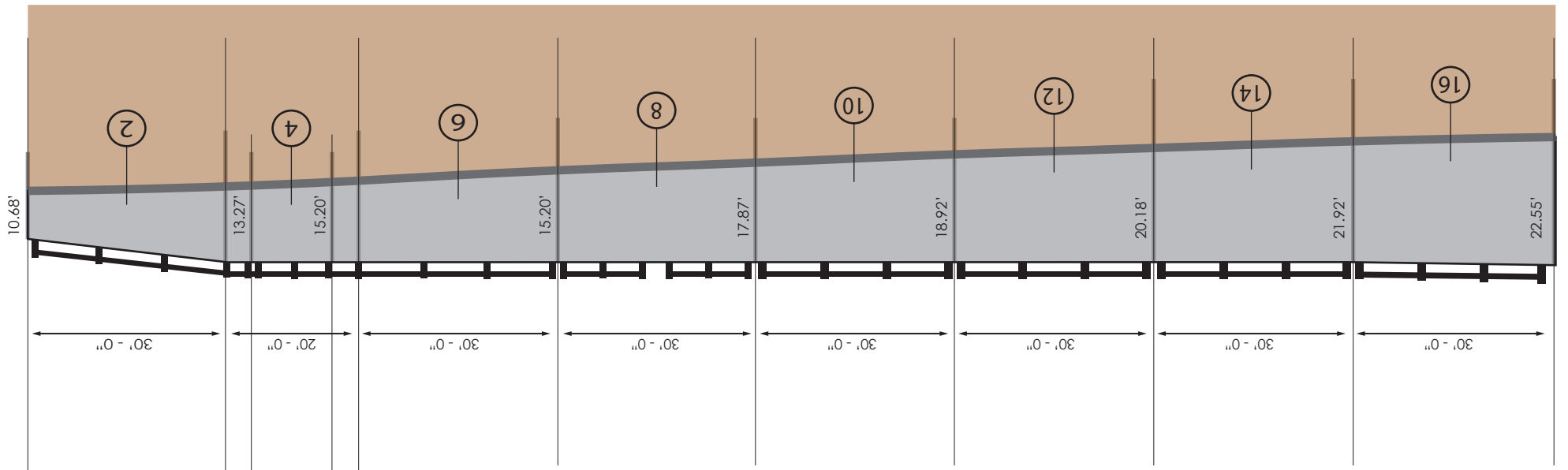
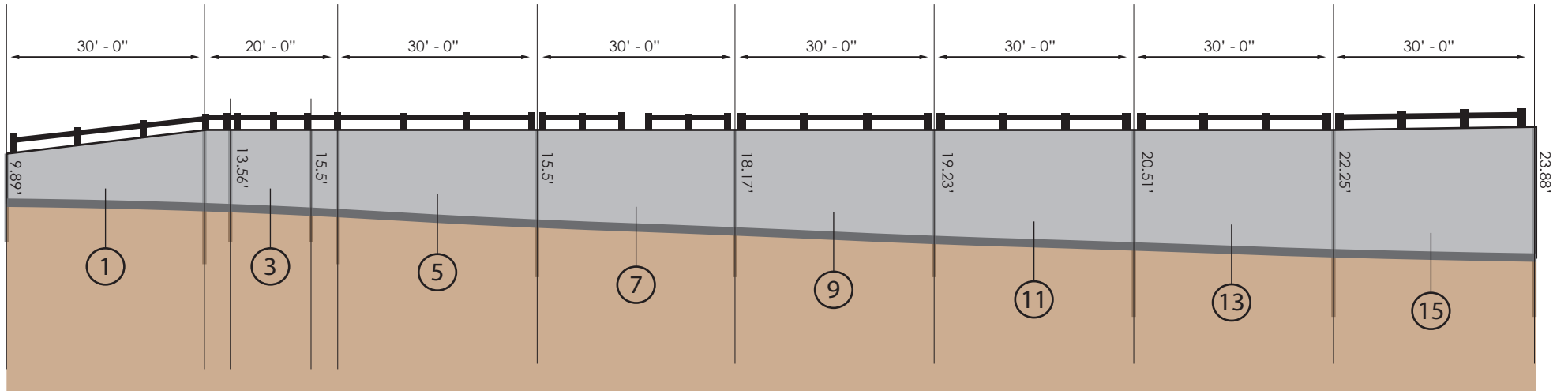
LANDSCAPING PLAN (SOUTH)

← South

→ North



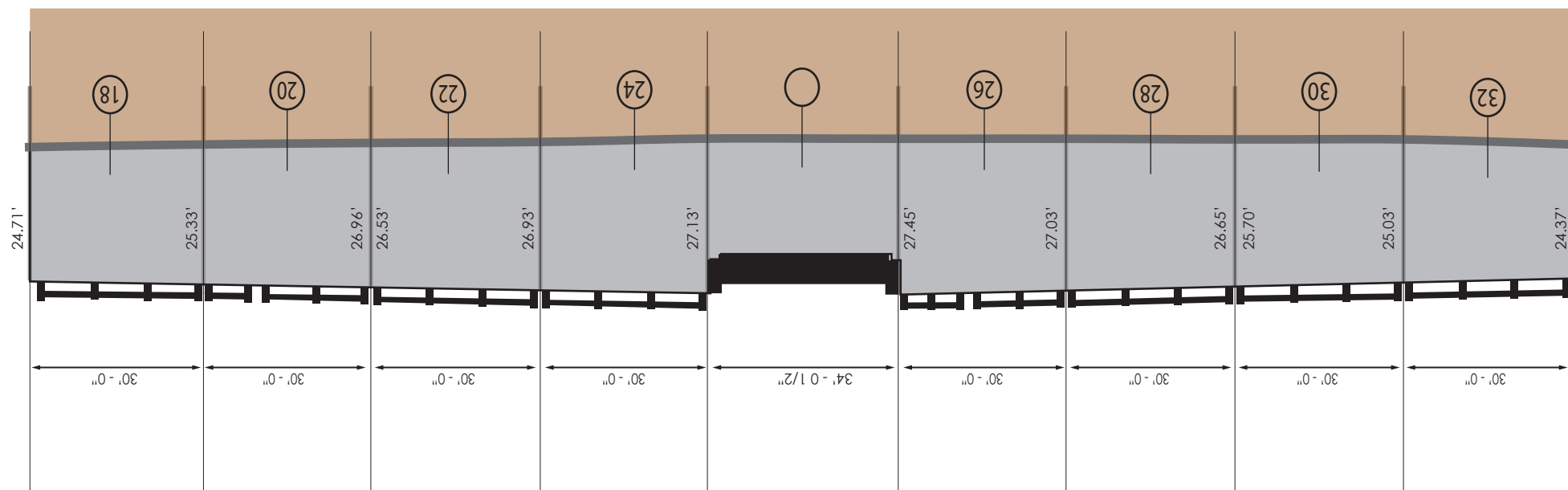
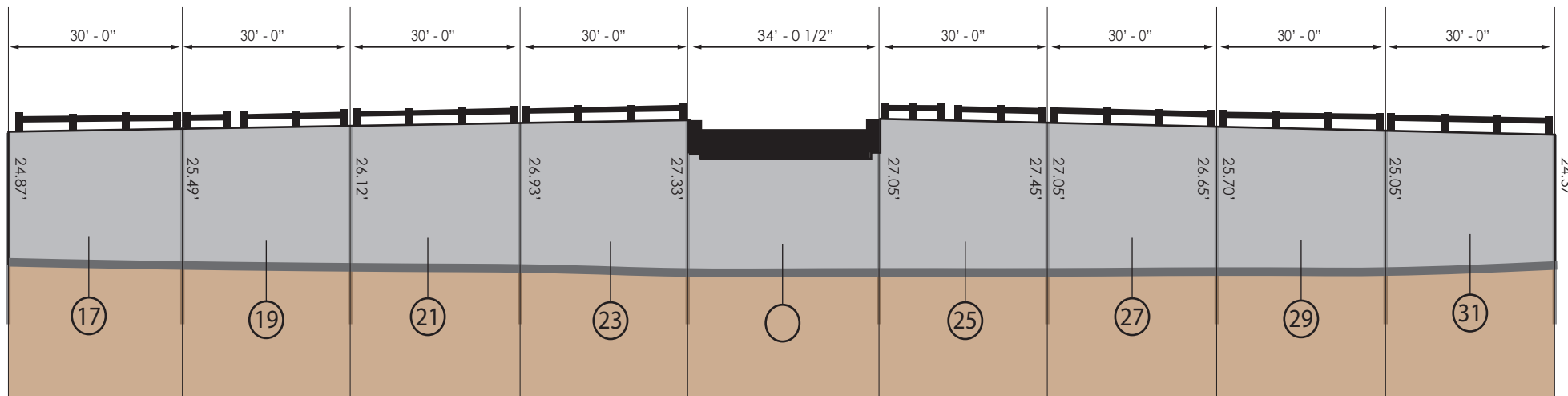
LANDSCAPING PLAN (NORTH)



WALL ELEVATIONS WITH DIMENSIONS (SOUTH)

← South

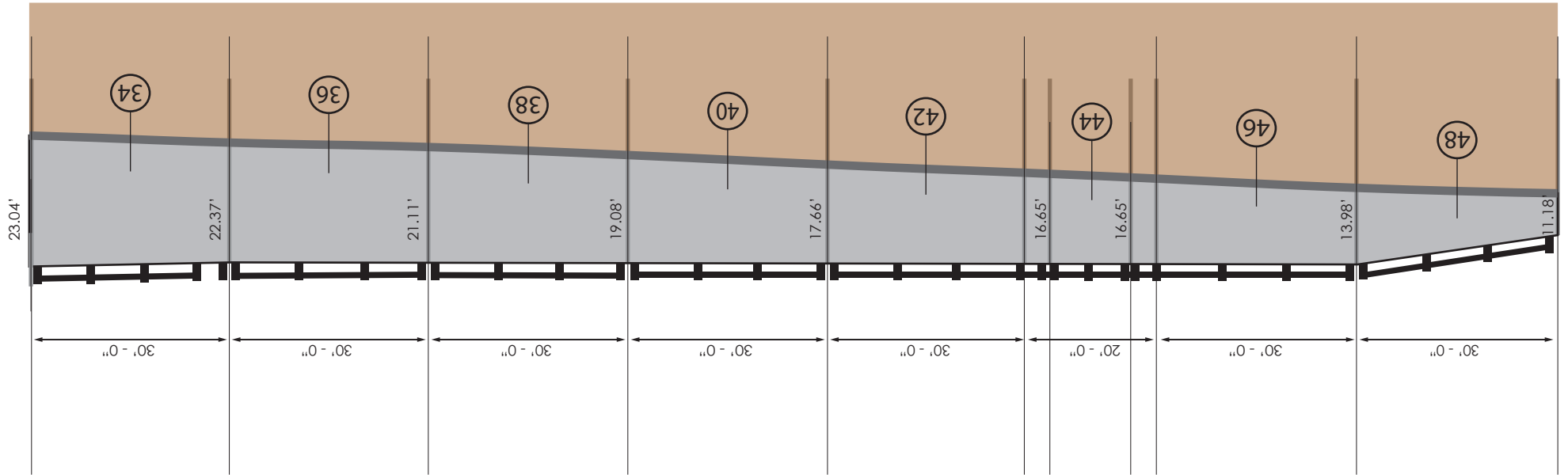
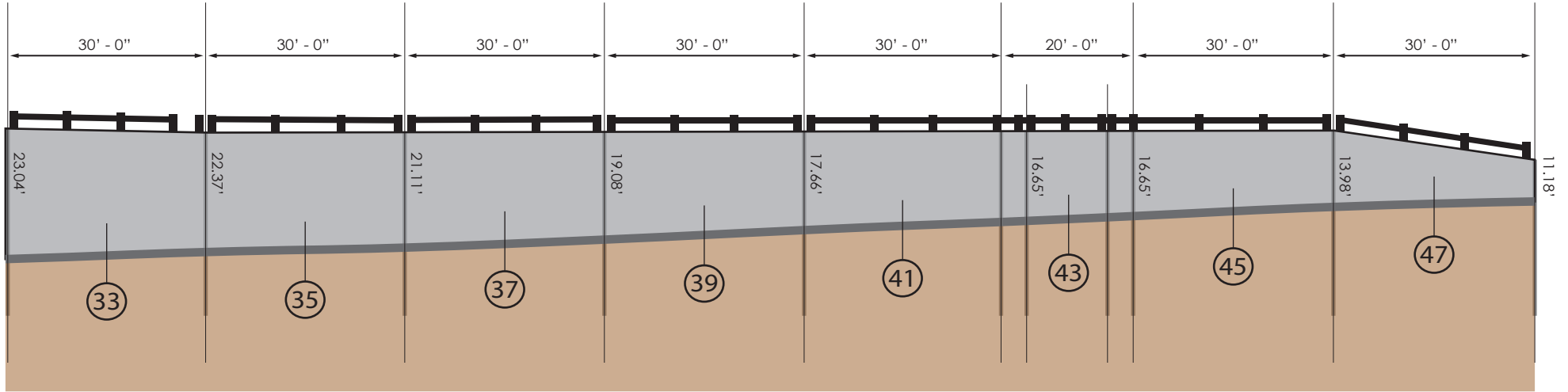
→ North



WALL ELEVATIONS WITH DIMENSIONS (MIDDLE)

← South

→ North



WALL ELEVATIONS WITH DIMENSIONS (NORTH)